

Technical Procedure

Release Date : May 2010
Version : 1.00
Author : Mathieu BINI
Equipment : SENTRY Counterfeit IC Detector
Location : S:\product support\PS SENTRY
Original File : SOIC Universal Adapter.doc

ABI Electronics Limited
Dodworth Business Park
Barnsley S75 3SP
South Yorkshire
United Kingdom
Tel: +44 (0)1226 207420
Fax: +44 (0)1226 207620
www.abielelectronics.co.uk

SENTRY Universal SOIC Adapter

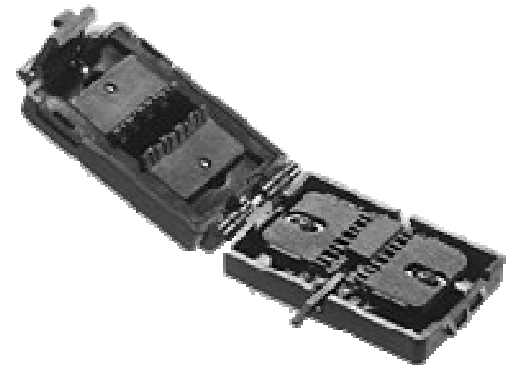


*This procedure should be undertaken by qualified personnel only.
Please follow all steps in the order set out below.*



A medium sized, cruciform (Phillips) screwdriver is required for this procedure.

The SENTRY Universal SOIC adapter is designed to accommodate a range of SOIC packages whilst keeping the exchange of adapters to a minimum. With the use of only one adapter, users can test devices with up to 44 pins without bending or otherwise damaging the legs, since no force is required to either insert or remove the component from the socket.



The Universal SOIC adapter accepts SOIC Gull-wing and J-Pb devices, up to 44 pins on 0.050" (1.27 mm) Pb pitch, body widths from 0.150" to 0.6" (3.81mm to 15.24mm).

1 Open the socket and familiarise yourself with each element as shown in figure 1

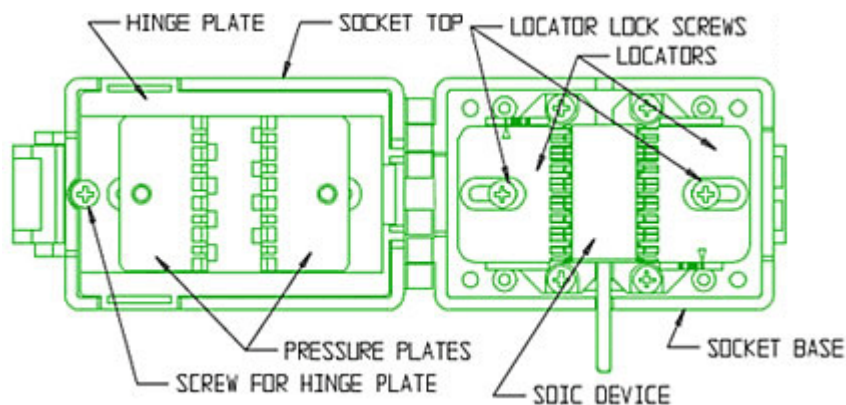


Figure 1: Universal SOIC adapter overview

- 2 Loosen locator lock screws
- 3 Slide both locators outwards and place the device to be tested in a central position on the contact blades
- 4 Slide both locators back towards the device until they make contact with the package of the device (a slight clearance is required for ease of loading and removal)

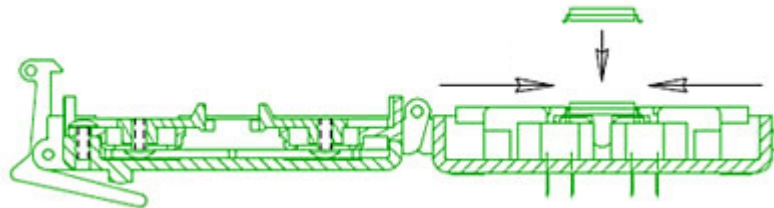


Figure 2: Place device and slide locators back

- 5 Remove screw for hinge plate and swing hinge plate up out of socket top

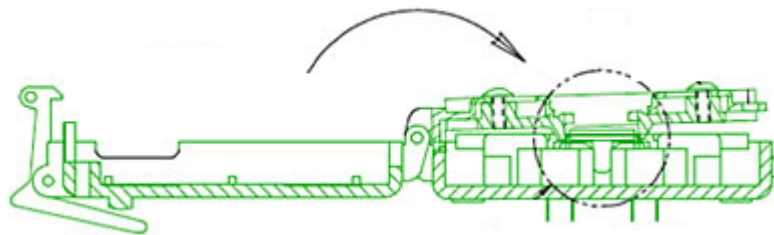


Figure 3: Swing hinge plate onto device

- 6 Loosen pressure plate locking screws and slide them out

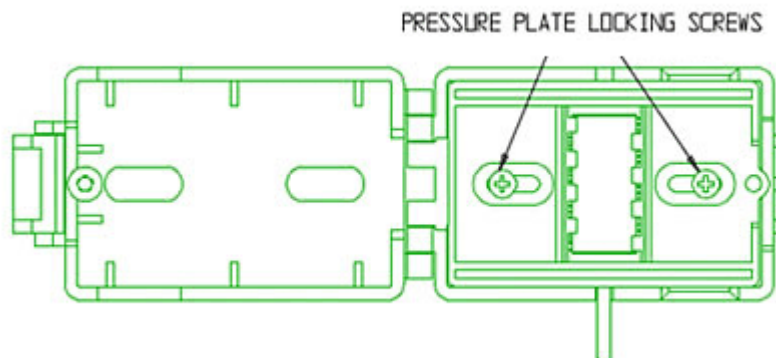


Figure 4: Loosen and slide pressure plates

7 Position pressure plates so they will press down on the feet (part of the lead that gets soldered on the board) of a gull wing device (see figure 5-A below). If the device has J-leads, position pressure plates to press down on the top of device's body (see figure 5-B below). Tighten screws.

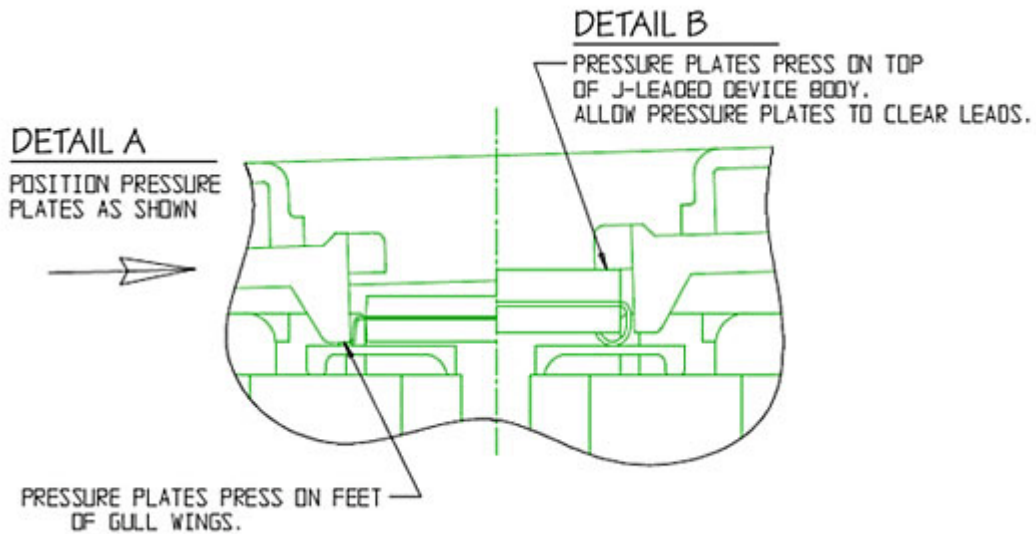


Figure 5: Placing of pressure plates on device

8 Swing hinge plate back into the socket top, place and tighten screw.

9 Double check settings. Place adapter into SENTRY unit.



The SOIC universal adapter is supplied with a small gauge to facilitate setting up standardised widths, if required.

End of Procedure
